

HAN-MECH CONTROLS CO., LTD

Portfolio

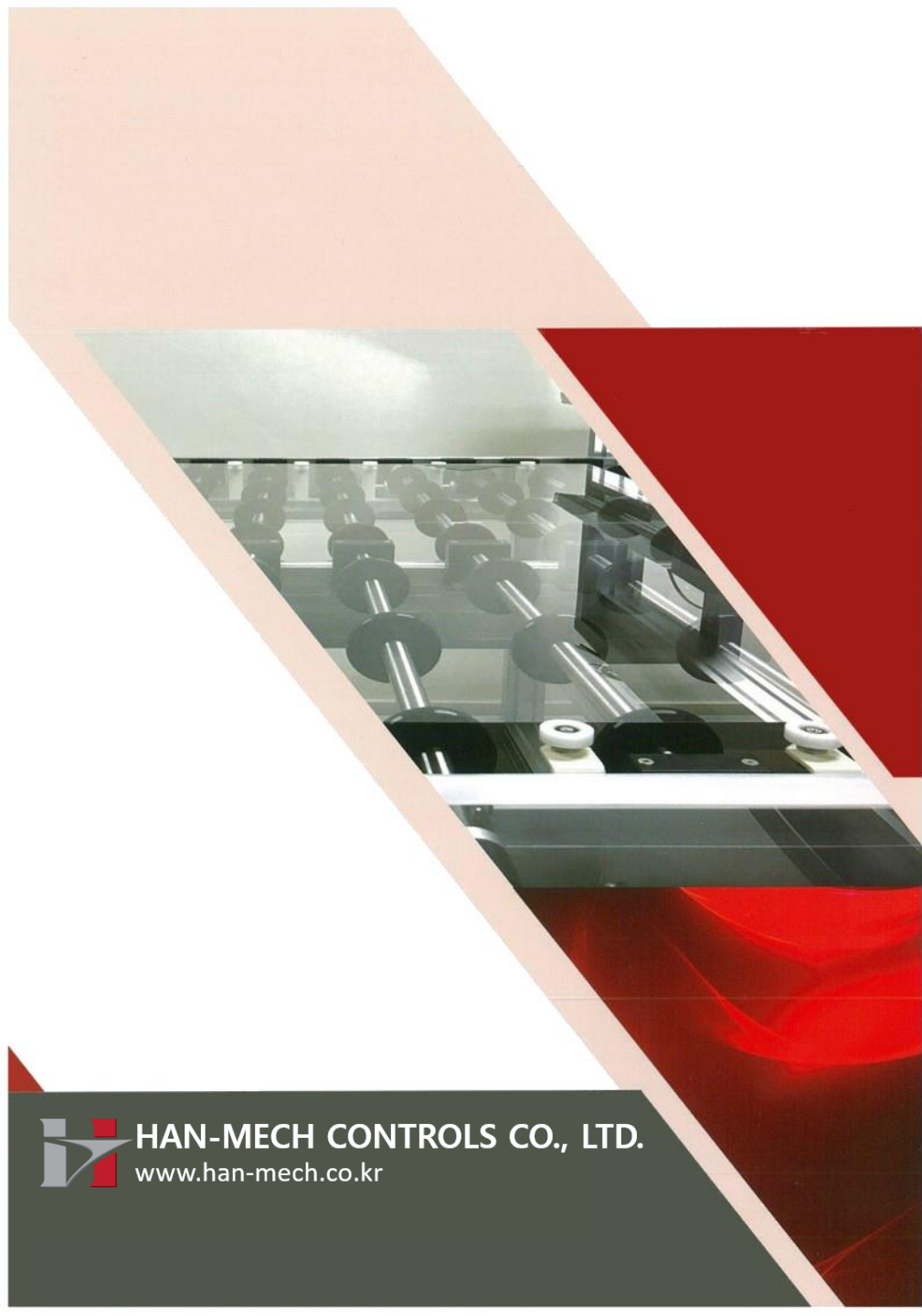
With HAN-MECH CONTROLS CO., LTD

1. Our Project
2. System Integration



HAN-MECH CONTROLS CO., LTD.

www.han-mech.co.kr



1. Our project

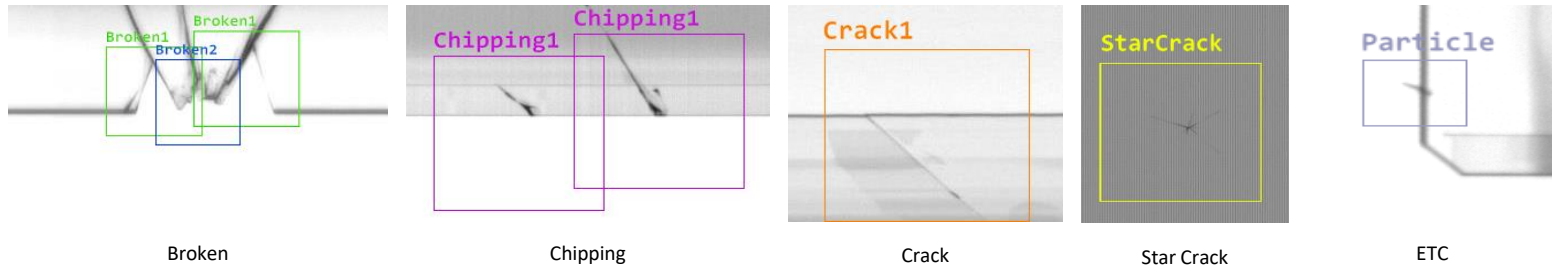
- Domestic & Overseas major Machine Vision SI project(2016~)

Classification	Customer	Project	Equipment	Generation	Year
Domestic	'L' Company	Oblique stain inspection system	Polishing	8.5G	2016.10~
	'S' Company	4 EDGE Vision System	Cell Packing	Flexible	2016.10~
	'S' Company	GECD System	Inspection	Flexible	2017.07~
	'Y' Company	F/F Gap VISION system	Inspection	-	2017.07~
	'Y' Company	Terminal alignment Vision system	Inspection	-	2017.07~
	'H' Company	Presence of parts of Navigation inspection	Inspection	-	2019.03~
	'M' Company	Vision system / EOP cover	Inspection	-	2019.10~
	'M' Company	Vision system / EOP housing	Inspection	-	2019.10~
Overseas	'C' Company	GCIS.AI-2940-FRONT	ODF, HVA, CUT	10.5G	2018.03~
	'C' Company	GCIS.AI-950-FRONT	EL	6G	2018.05~
	'C' Company	GCIS.AI-1500-FRONT	MOD	6G	2018.05~
	'B' Company	GCIS.AI-2940-FRONT	Washer	10.5G	2019.04~
	'B' Company	AOI inspection system: GCIS.AI-2940-FRONT	Rubbing	10.5G	2019.04~
	'C' Company	GCIS.AI-1500-FRONT	MOD	6G	2019.07~
	'C' Company	GCIS-2EDGE(GLASSS CRACK INSPECTION SYSTEM, 2 Edge)	PVD washer	6G	2019.08~
	'H' Company	GCIS-2EDGE(Crack & Broken & Chipping)	CF	8.6G	2020.08~

2. System Integration

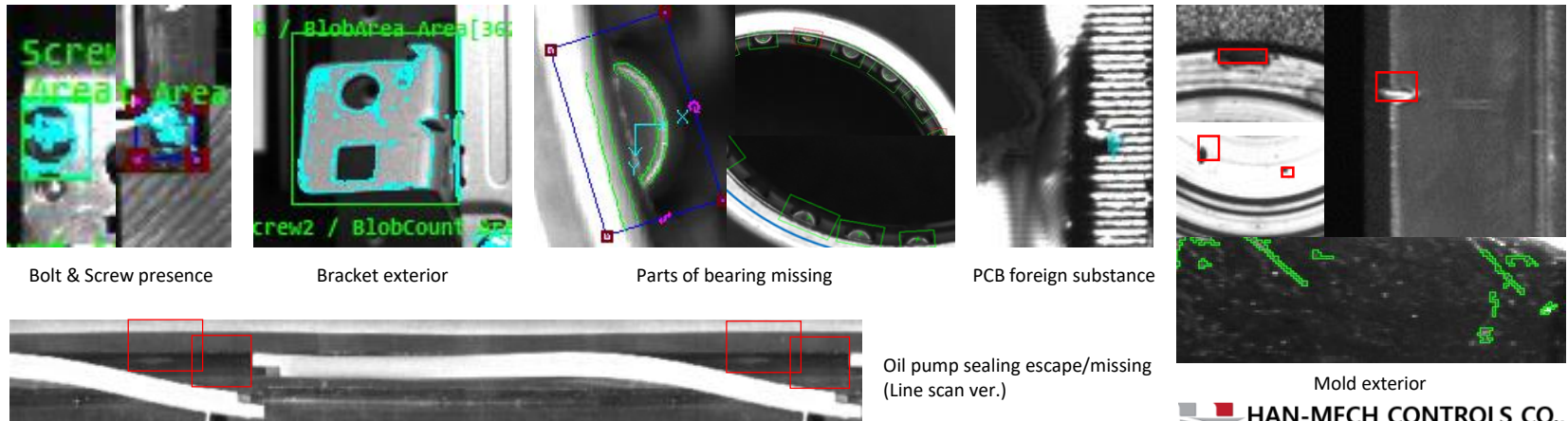
- Detection item and inspection field (1) Exterior defect inspection

- ◇ Display panel



- Determine the defect of the glass exterior
- Define and classify the defect type
- Complex vision inspection(AI + rule-based) according to the item to be detected

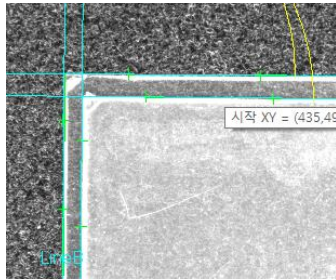
- ◇ Automobile & ETC



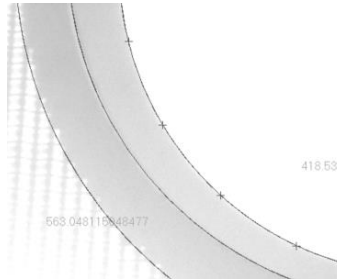
2. System Integration

- Detection item and inspection field (2) Alignment & OCR, Code reading

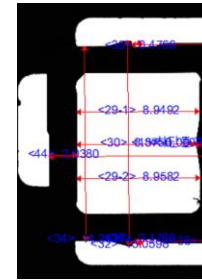
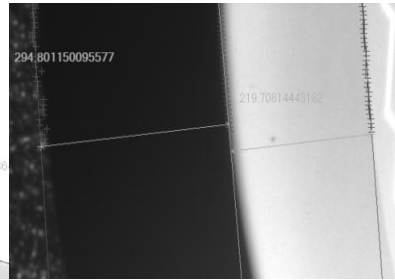
- ◇ Alignment & Measurement



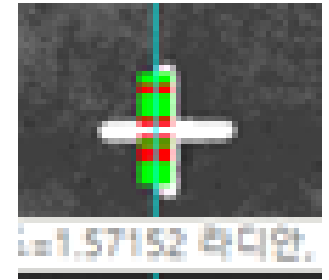
2 sheets film Alignment



Diameter(left) & spacing(right) of hard lami with different heights



Micro(μ m) dimension measurement

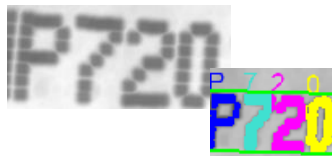


(+) mark Alignment

- ◇ OCR



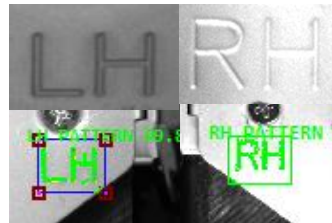
Audio box



Dot type

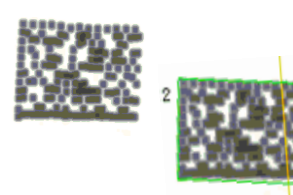


Food packaging



Engraving

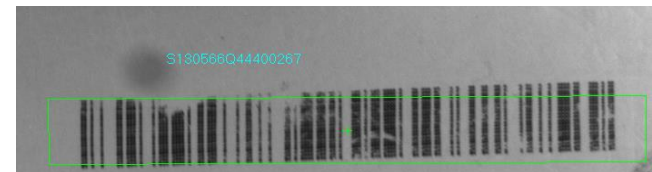
- ◇ Code reading



Dot DM code



DM code on secondary battery



Bar code on secondary battery

2. System Integration

● Customizing program

Customer logo

Mode

Trigger

Cam Q'ty

PLC connection status

Date & time

Inspection screen

Cam Info

Image grab Info

Inspection status

Sample ID

Full image

Real-time inspection result

Log Data

System Info

Detail inspection result

- 1) Sample No.
- 2) Sample ID
- 3) Insp Result: OK/NG/WARNING
- 4) Insp Date

Defect Info Detail

- 1) CamNo: Cam No. with defect
- 2) Dft Type: Defect type classification
- 3) X(mm): Defect's X position
- 4) Y(mm): Defect's Y position

- If necessary, we can add and develop functions.
- We offer a customized program that you want.

HAN-MECH CONTROLS CO., LTD

Portfolio

- Thank you -



HAN-MECH CONTROLS CO., LTD.

www.han-mech.co.kr

